

TWENTY FIRST SUNDAY OF ORDINARY TIME

Gregorian Chant for the
English Propers of the Mass

Antiphons of the Roman Missal

by

Columba Kelly, OSB

Sacrae Musicae Doctor

Monk of Saint Meinrad Archabbey

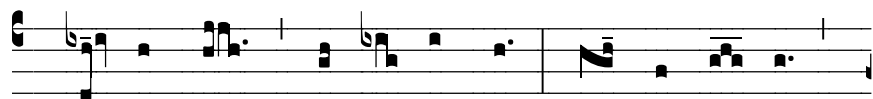
--pre-publication release--

Text: © 1989 ICEL All Rights Reserved.
Music: © Saint Meinrad Archabbey. All Rights Reserved.

TWENTY FIRST SUNDAY
OF ORDINARY TIME

INTROIT

Ps 86:1-3



1. Lis- ten, Lord, and an- swer me. Save your ser- vant



who trusts in you. I call to you all day long,



have mer- cy on me, O Lord.

GOSPEL ACCLAMATION



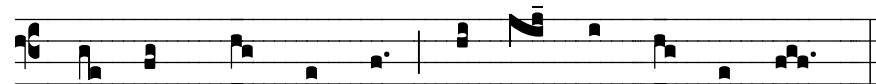
8. Al- le- lu- ia, al- le- lu- ia, al- le- lu- ia.

COMMUNION

Ps 103:13-15



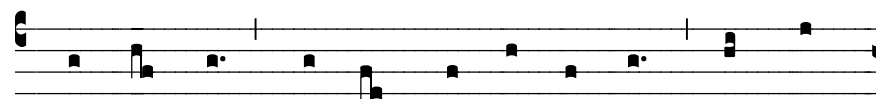
2. Lord, the earth is filled with your gift from heav- en;



man grows bread from earth, and wine to cheer his heart.

-OR-

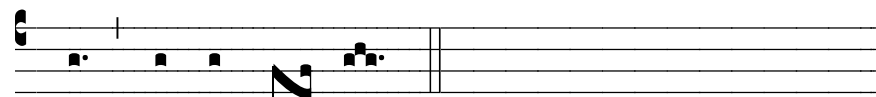
Jn 6:55



8. The Lord says: The man who eats my flesh and drinks



my blood will live for e- ver; I shall raise him to



life on the last day.