

THE EPIPHANY OF THE LORD

Gregorian Chant for the
English Propers of the Mass

Antiphons of the Roman Missal

by

Columba Kelly, OSB

Sacrae Musicae Doctor

Monk of Saint Meinrad Archabbey

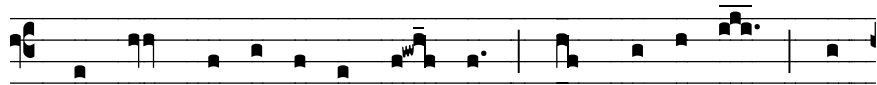
--pre-publication release--

Text: © 1989 ICEL All Rights Reserved.
Music: © Saint Meinrad Archabbey. All Rights Reserved.

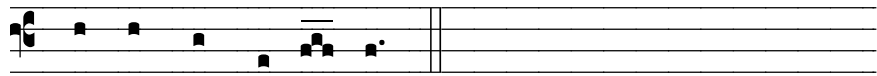
THE EPIPHANY OF THE LORD

INTROIT

(See Mal 3:1; 1 Chr 29:12)



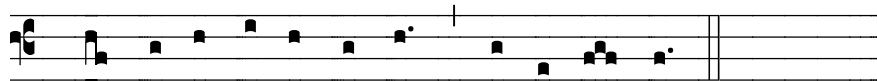
2. The Lord and rul-er is com-ing; King-ship is his, and



gov-ern-ment and pow-er.

RESPONSORIAL PSALM

Ps 72:1-2, 7-8, 10-11, 12-13



2. Lord, ev-ry na-tion on earth will a-dore you.

GOSPEL ACCLAMATION



2. Al- le- lu- ia, al- le- lu- ia, al- le- lu- ia.

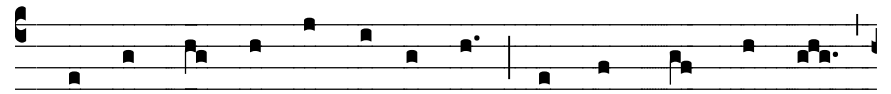
VERSE

Mt 2:2

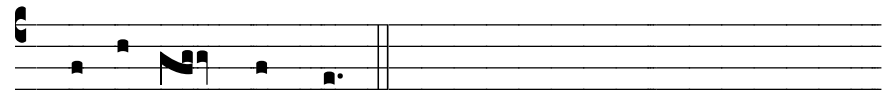
We have seen his star in the east,
and have come to adore the Lord.

COMMUNION

(See Mt 2:2)



4. We have seen his star in the east, and have come with gifts



to a-dore the Lord.