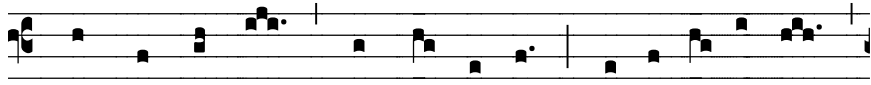
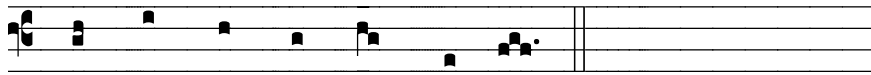


COMMUNION

Mt 4:4



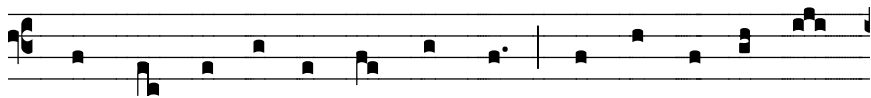
2. Man does not live on bread alone, but on every word



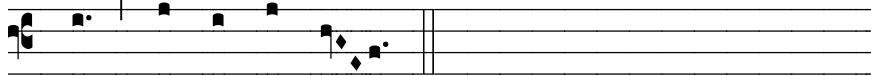
that comes from the mouth of God.

-OR-

Ps 91:4



2. The Lord will overshadow you, and you will find re-



fuge under his wings.

FIRST SUNDAY OF LENT

Gregorian Chant for the
English Propers of the Mass

Antiphons of the Roman Missal

by

Columba Kelly, OSB

Sacrae Musicae Doctor

Monk of Saint Meinrad Archabbey

--pre-publication release--

Text: © 1989 ICEL All Rights Reserved.

Music: © Saint Meinrad Archabbey. All Rights Reserved.

FIRST SUNDAY OF LENT

INTROIT

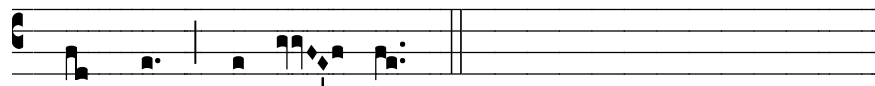
Ps 91:15-16



8. When he calls to me, I will answer; I will res-



cue him and give him honor. Long life and con-



tentment will be his.

RESPONSORIAL PSALM

Year A:

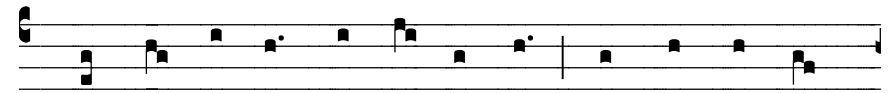
Ps 51:3-4, 5-6, 12-13, 14-17



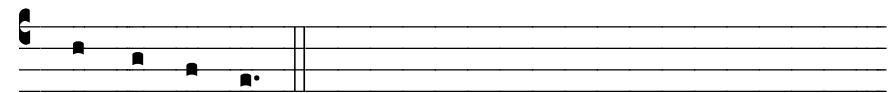
3. Be merciful, O Lord, for we have sinned.

Year B:

Ps 25:4-5, 6-7, 8-9



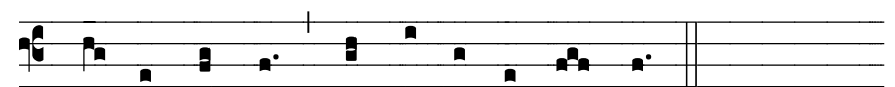
4. Your ways, O Lord, are love and truth to those who keep



your covenant.

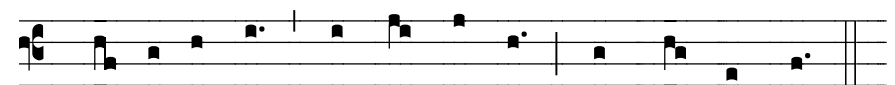
Year C:

Ps 91:1-2, 10-11, 12-13, 14-15



2. Be with me, Lord, when I am in trouble.

GOSPEL ACCLAMATION



2. Glory to you, O Word of God, Lord Jesus Christ.

VERSE

Mt 4:4

One does not live on bread alone,
but on every word that comes forth from the mouth of God.